

Finding Conferences

Start with Associations

- ▶ International Studies Association (<http://www.isanet.org/>)
- ▶ American Political Science Association (<http://www.apsanet.org/>)
- ▶ Mid-West Political Science Association (<http://www.mpsanet.org/>)
- ▶ Florida Political Science Association (<http://www.fpsanet.org/>)
- ▶ Association for Asian Studies (<http://www.asian-studies.org/>)
- ▶ International Convention for Asia Scholars (<http://www.icassecretariat.org/>)
- ▶ Middle East Studies Association (<http://mesana.org/>)
- ▶ South Asian Studies Association (<http://sasaonline.net/>)

Membership Fees: to pay or not to pay?

- ▶ Membership fees reduce conference application costs
- ▶ They also open up funding options for travel
- ▶ They also open up grant opportunities for grad and undergrads for research
- ▶ They also open up job listings
 - ▶ Only useful to graduate students since these listings are in academia
- ▶ You will also get voting rights within the association as well as access to some publications from the journals these associations publish

Conference Level

- ▶ **Local**
 - ▶ Generally easy to be accepted into
 - ▶ Best suited for undergrads or grad students seeking to get some experience
- ▶ **Regional**
 - ▶ Not difficult to be accepted into
 - ▶ Also an excellent forum for grads to get conference experience
 - ▶ This may be the most optimal level for graduate students seeking to network
 - ▶ Most will allow undergrads to present their papers
 - ▶ Usually in undergrad-only panels, although mixed panels are common
 - ▶ There may be some pre-requisites for undergrads seeking to participate in these
- ▶ **National**
 - ▶ Very difficult to be accepted into
 - ▶ Usually recommended for graduate students who have
 - ▶ Best place to meet all the heavyweights in your field
 - ▶ Difficult to network unless you have an established line of work
 - ▶ Difficult to network due to the sheer number of panels
- ▶ **International**
 - ▶ Very difficult to be accepted into
 - ▶ Usually accepts panels rather than individual submissions

Conference Proposal Writing

Rayna Ruseňko
Graduate Student
Asian Studies / Global & Sociocultural Studies

First READ the call for conference papers. NOTE the: proposal length, format, content, deadline

- ▶ Conference Topic – MUST relate to your own work
When considering writing your proposal, decide:
 - ❑ What will you contribute to the subject of the conference? Be EXPLICIT
 - ❑ How does your work relate to thinkers, texts, time periods, methods, questions, or other elements pertaining to the conference?
 - ❑ What 'buzzwords' or key concepts used in the conference can you utilize/accentuate/adopt?
 - ❑ Make sure your topic covers no more than can fit in a 15-20 minute presentation.
- ▶ Make sure you start with a GOOD Title
- ▶ Your format should follow:
Intro => Thesis (limit to 1 sentence) => Approach to the subject => SIGNIFICANCE of the study
(This is the main contribution & most important part of your proposal) => Findings
- ▶ When writing, consider: Audience & appropriate level of terminology
- ▶ Also, where possible, see who keynote speakers will be & whether their research is relevant to your work

Before submitting, proofread & get a second opinion from friends, academic colleagues!

How to Present

Know the Requirements

- ▶ Type of presentation
- ▶ Length
- ▶ Do you need to provide materials?
- ▶ Who is your audience?



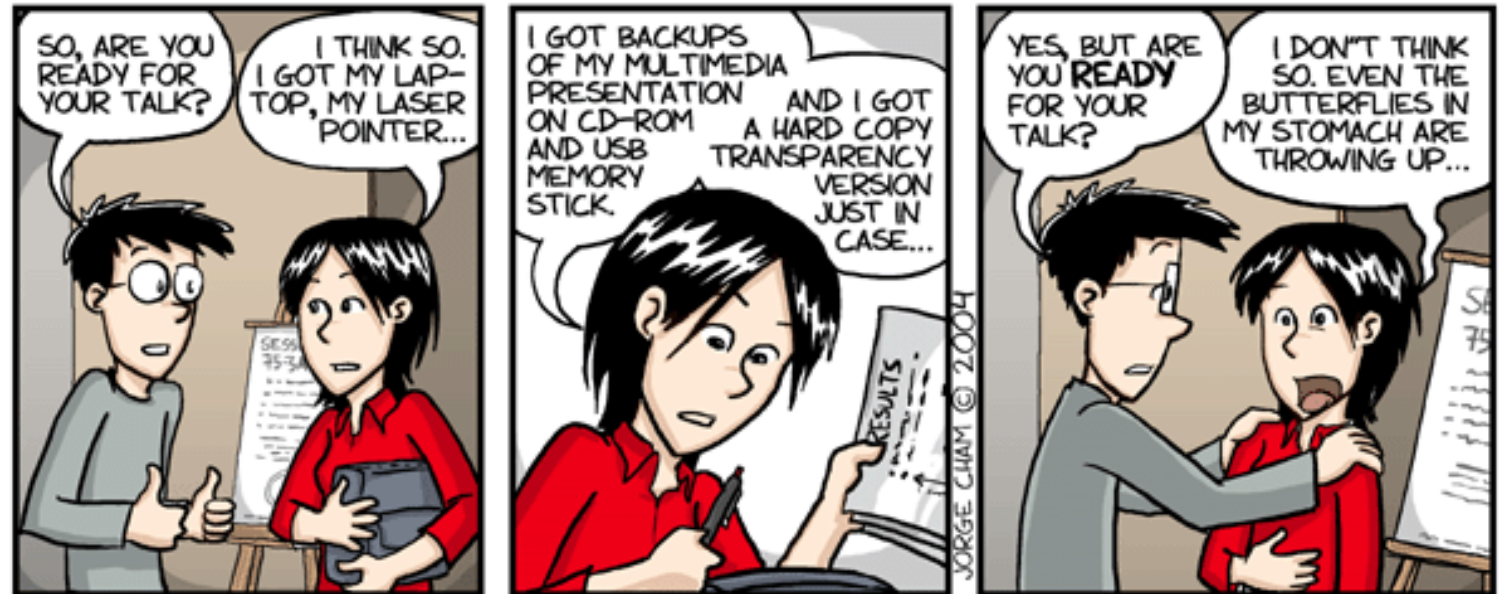
He then drew a number of smaller pie charts behind the bigger chart. That helped to put it into perspective.

Be Prepared

- ▶ Prepare early
- ▶ Know the material
- ▶ Practice
- ▶ Relax

Piled Higher and Deeper by Jorge Cham

www.phdcomics.com



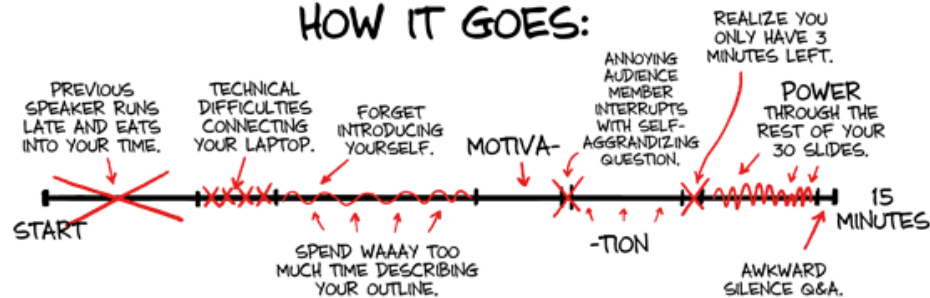
title: "Conference" - originally published 8/25/2004

YOUR CONFERENCE PRESENTATION

HOW YOU PLANNED IT:



HOW IT GOES:

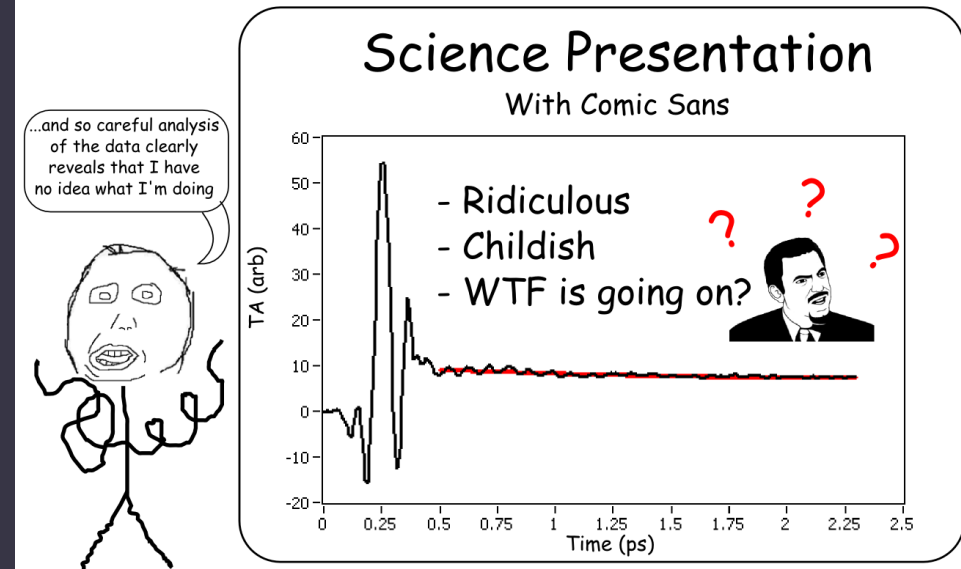
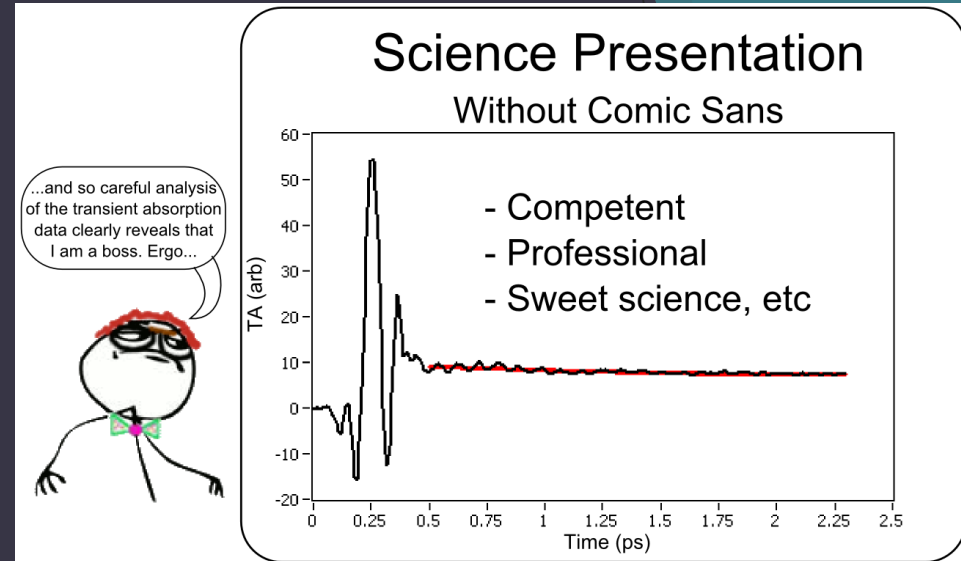


What to Include

- ▶ Title
- ▶ Name
- ▶ School or professional affiliation
- ▶ Name of conference
- ▶ Date and location
- ▶ Contact information
- ▶ Most important content
- ▶ References

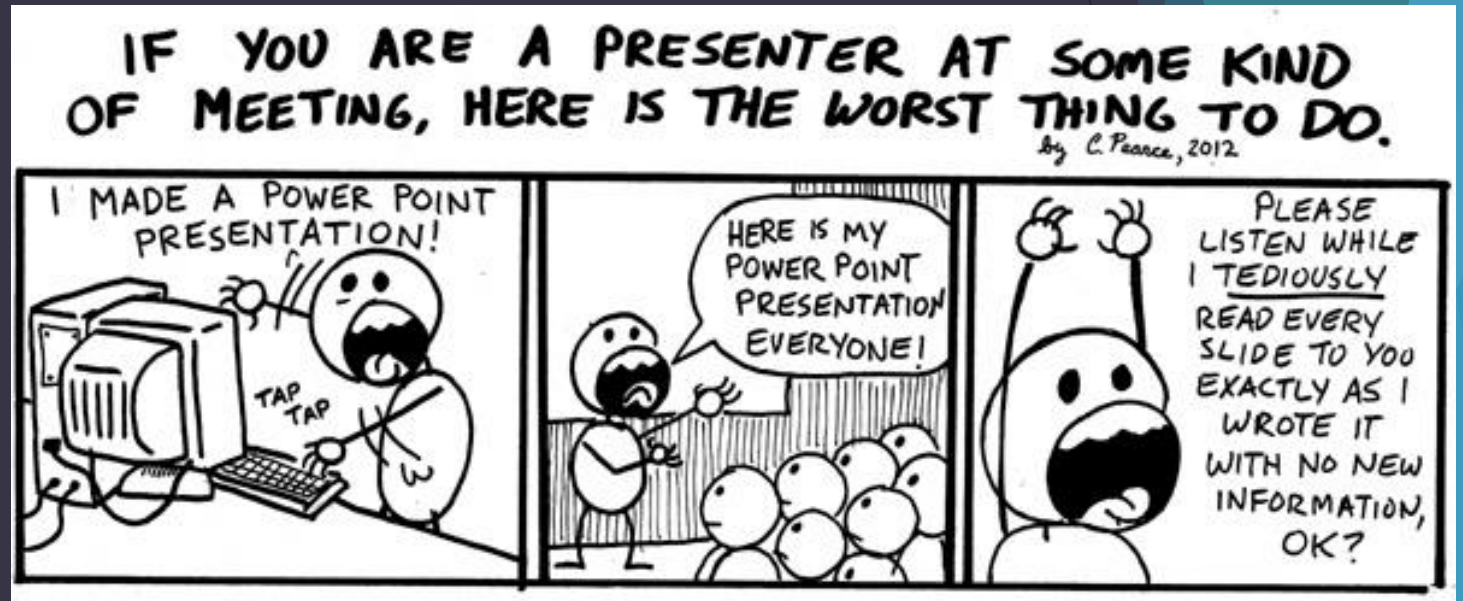
Visuals and Handouts

- ▶ Visuals are important
 - ▶ Powerpoint, Prezi, etc.
 - ▶ Don't use too much text: 120 words MAX.
 - ▶ Use images, graphs, figures
- ▶ Handouts
 - ▶ Should be legible when printed
 - ▶ Room for notes



Tips

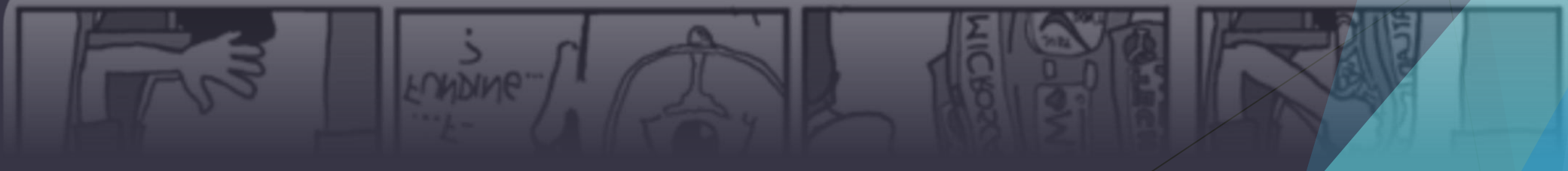
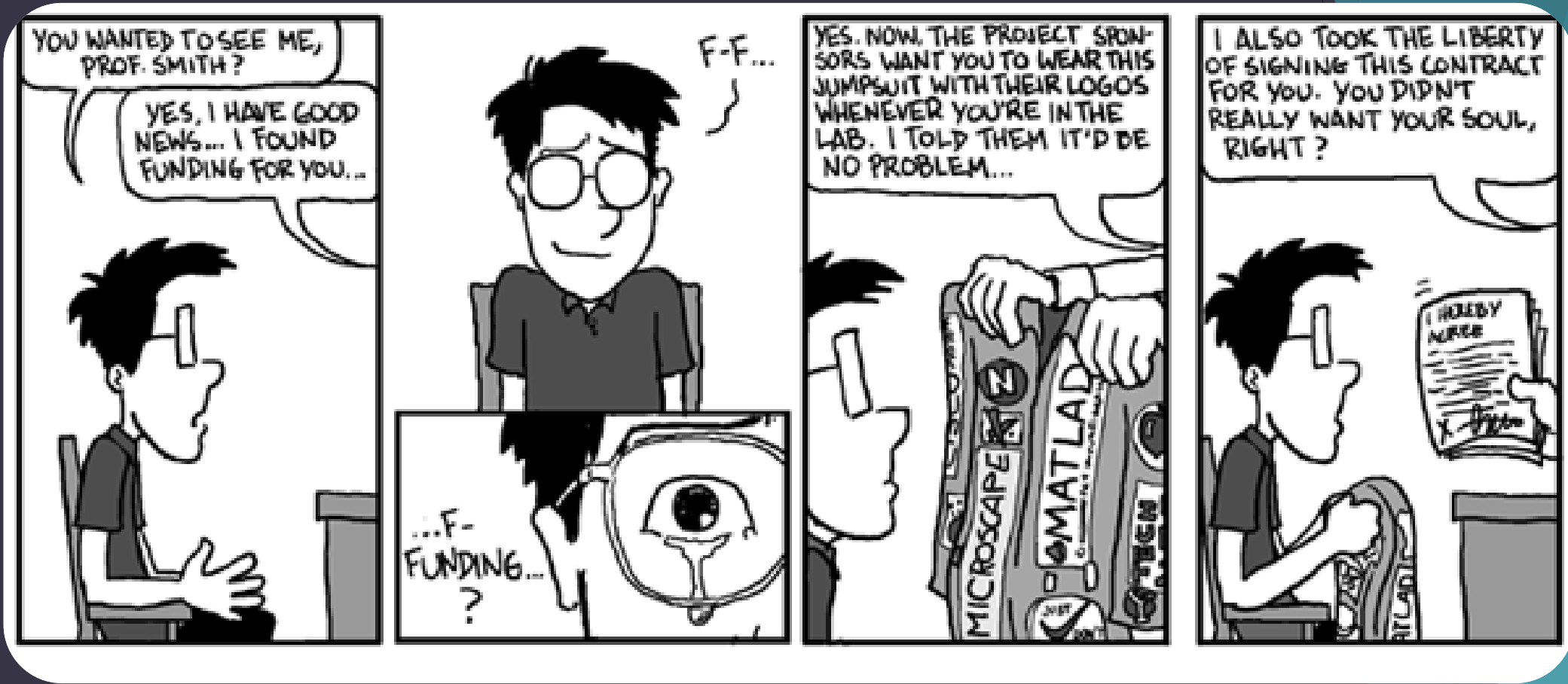
- ▶ Do not read off your slides
- ▶ Build in time for questions
- ▶ Attend other conferences and presentations
- ▶ Be sure to proofread
- ▶ Make eye contact
- ▶ Fake it until you make it!





How to Get Funded for Research at FIU

Maria Sol Echarren





GPSC FUNDING OPPORTUNITY

▶ Visit: gpsc.fiu.edu

The **good** news...



- ▶ Students can apply for:
 - ▶ Conferences {active participant / presenter}
 - ▶ domestic and international travel is **up to \$500** per AY
 - ▶ Professional development {passive participant / attending}
 - ▶ domestic and international travel is **up to \$150** per AY
 - ▶ Research Travel
 - ▶ domestic and international travel is **up to \$500** per student per semester, for thesis and dissertation research

The **bad** news... GPSC Funding rules

- ▶ Request must be submitted at least 5 weeks (35 days) in advance to GC 2202
- ▶ First-come/first-served basis
- ▶ Travel must occur within 48 hours of event start/end dates
- ▶ In accordance with FIU Travel Policy, travel must originate and end in Miami/Ft. Lauderdale
- ▶ All proposals are subject to availability of funds
- ▶ You will need to review the [FUNDING WORKSHOP PRESENTATION](#) prior to downloading and filling out the application form.



GPSC - CONFERENCE FUNDING



- ▶ Includes Academic Conferences and Meetings
- ▶ The **maximum amount** allotted to each student for both **domestic and international** travel is up to \$500. This funding can only be used toward ONE type of transportation and/or conference registration fees.
- ▶ [Conference Funding Information](#)

GPSC - PROFESSIONAL DEVELOPMENT



- ▶ Includes: public speaking and grant writing workshops, pedagogical seminars, such as technology in the classroom and job fairs.
- ▶ Upon the return from their trip the student must present the skills learned at an assigned workshop at FIU.
- ▶ The **maximum amount** allotted to each student for both **domestic and international travel** is up to \$150. This funding can only be used toward conference registration fees.
- ▶ [Professional Development Request Form](#)

GPSC - RESEARCH FUNDING PROGRAM



- ▶ Funding available to help students conduct their research
- ▶ The **maximum amount** allotted to each student for both **domestic and international** travel is up to \$500 per student per semester, for thesis and dissertation research.
- ▶ **MUST HAVE M-2 OR D-2 FORM APPROVED**
- ▶ Funding can be applied only for travel.
- ▶ [Research Funding Information](#)

CSO organizations

- ▶ Members of a student-led organizations under CSO at FIU can request funds as Special Allocations (up to \$1200) provided that the club has met the 11 points required by CSO per semester.
- ▶ The funds, if approved by CSO, can be used towards research conferences, field trips to gather data and materials, academic excursions and similar events if it is shared for at least 3 or more members of the organization and is in agreement with the club's constitution.



college & Departmental funding



- ▶ Check with the **College**. [Must meet academic criteria to apply.]
 - ▶ **CAS** (offers an award up to \$200 once a year to encourage graduate students to present their research at professional conferences, to defray travel expenses associated with research, or to interview for a job.)
 - ▶ **SIPA** (several resources and grants available on their website)
 - ▶ One example is the **Morris and Anita Broad Fellowship** (for doctoral students to advance in their research - up to \$750 once a year)
- ▶ Check with your **Department** for research and conference funding.
 - ▶ Travel funds may be provided (in limited amounts).

Resources

- › Faculty Grants and Fellowships
- › Graduate and Undergraduate Student Scholarships and Fellowships
- ›› Undergraduate Scholarships/ Fellowships
- ›› Graduate Scholarships/ Fellowships
- ›› Other Scholarships/ Fellowships (Post- Graduate Opportunities [B.A, M.A, Ph.D])

Home → Resources → Graduate and Undergraduate Student Scholarships and Fellowships

Graduate and Undergraduate Student Scholarships and Fellowships

This is not a comprehensive list of all funding available. For more assistance searching for funding opportunities or determining upcoming deadlines contact Arie Spirgel (MARC 270, aspirgel@fiu.edu, 305-348-0005)

[Click here](#) to download a complete list of Grants and Fellowships

- [FIU Office of Scholarships and Fellowships](#)
- [FIU Foundation Scholarships](#)
- [Undergraduate Scholarships/ Fellowships](#)
- [Graduate Scholarships/ Fellowships](#)
- [Other Scholarships/ Fellowships \(Post- Graduate Opportunities \[B.A, M.A, Ph.D\] \)](#)

A Must Read, ["Making Global Impact" Guide to International Jobs in Government](#)



Research >

> Publications

> Tinker Field Research Grant

>> 2015 Tinker Field Research Grant Awardees

>> 2014 Tinker Field Research Grant Awardees

> Eliana Rivero Research Scholarship

> Digital Library of the Caribbean (dLOC)

> Disaster Risk Reduction (DRR) in the Americas

Home → Research → Tinker Field Research Grant

Tinker Field Research Grant

The Kimberly Green Latin American and Caribbean Center (LACC) at Florida International University was selected from among the nation's leading Latin American Studies programs as a recipient of the prestigious Tinker Field Research Grant.

The Tinker Foundation Field Research Grants Program funds graduate student travel to any Spanish or Portuguese-speaking country in Latin America and the Caribbean to conduct research directly related to the region. It is designed to provide budding scholars with critical support for pre-doctoral research and also enables them develop contacts with leading scholars and institutions in their respective fields of study.

With available funding levels of \$10,000 or \$15,000 per year, LACC is particularly proud of being awarded one of the Tinker Foundation's \$15,000/year grants which carries with it the possibility of two additional one-year renewals. LACC's 1:1 match brings total support for Tinker grant graduate student awardees to \$90,000 over 3 years.

Contact LACC's Director of Research at (305)348-2894 for more information about our Tinker Field Research Grant program.

[Tinker Field Grant Application](#)

FIU Scholarships, fellowships and other grants



- ▶ fiu.academicworks.com
 - ▶ Includes some funding for graduate students, including dissertation fellowships, research grants, and other scholarships and awards

FIU

Scholarships

Powered by the
FIU Foundation, Inc.

Questions?

- ▶ Some points to remember...
 - ▶ Apply early!
 - ▶ Make sure to maintain good GPA and academic standing
 - ▶ Inquire with your department & college for funding opportunities and other research grants
- ▶ Stay Connected...
 - ▶ [Asian Studies Website](#)
 - ▶ [Asian Studies Facebook Page](#)
 - ▶ [Asian Studies Alumni and Friends Facebook Page](#)